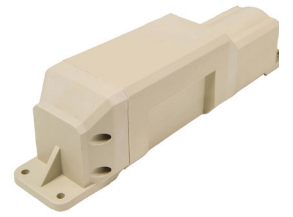


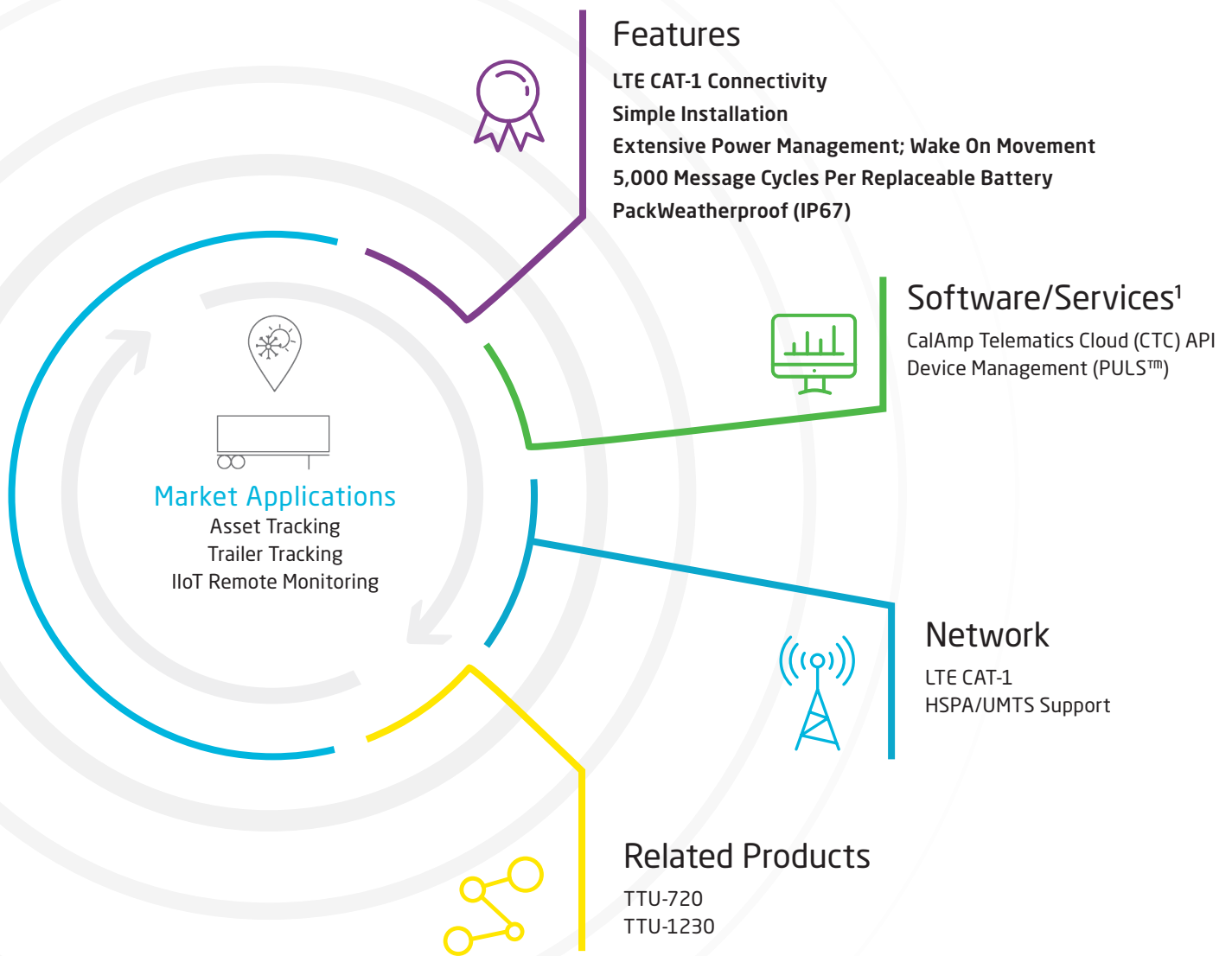
TTU-730™

LTE CAT-1



An LTE Enabled, Battery Operated Asset Tracker Made for Rapid Deployment, Extended Use and Reliable In-Field Installation

The TTU-730™ LTE CAT-1 is a battery operated asset tracking device designed for multi-year deployments. PEG™ intelligent capabilities, enable proven performance for extended life. Weatherproof design incorporating internal antennas simplifies installation making it best suited for unpowered assets in extreme and rugged environments.



T730Q419DS V11-C

© 2021 CalAmp. All specifications are typical and subject to change without notice.

¹ Subscription service enabled. Contact sales rep for additional details.

Cal/Amp®

CalAmp
15635 Alton Pkwy Ste 250
Irvine, CA 92618
888.3CALAMP
calamp.com

TTU-730™ LTE CAT-1 Technical Specifications

Cellular/Network

North American Variant I

LTE CAT-1	1900 (B2)/AWS 1700 (B4)/850 (B5)/700 (B17) MHz
HSPA/UMTS	850 (V)/1900 (II) MHz

North American Variant II

LTE CAT-1	AWS 1700 (B4)/700 (B13) MHz
-----------	-----------------------------

Data Support

SMS, UDP Packet Data

Satellite Location (GNSS)

Constellation Support	GPS, GLONASS, SBAS Engine (WAAS, EGNOS, MSAS, GAGAN)
Channels	55 Channel
Tracking Sensitivity	-167 dBm
Acquisition Sensitivity	-157 dBm (hot start) -148 dBm (cold start)
Location Accuracy	~2.0m CEP Open Sky (SBAS 24 hours static)
Location Update Rate	1 Hz
AGPS Location assistance capable	

Certifications

Industry Certifications	FCC, IC, PTCRB, RoHS
-------------------------	----------------------

Cloud/Software Services¹

PULS™	Monitor, manage, upgrade firmware, configure and troubleshoot devices remotely
CTC	Device data stream via RESTful APIs

Edge Intelligence¹

PEG™	Behavioral scripting (8-bit support)
Accelerometer	Built-in, triple-axis (motion sensing, tilt detection)
Geo-fences	10 built-in
Buffered Messages	2000

Electrical

Operating Voltage	3.6V internal battery
Power Consumption	Typical 30uA @ 3.6V (hibernate) Typical 50uA @ 3.6V (deep sleep) Typical 50mA @ 3.6V (active GPS tracking only) Typical 80mA @ 3.6V (cellular idle only)

Battery Pack

Battery Capacity	Up to 57 Ah
Battery Voltage	3.6V
Battery Technology	Lithium Primary

Environmental

Temperature	-30° to +65° C (operating tethered and storage)
Humidity	85% RH @ 50° C non-condensing
Shock and Vibration	U.S. Military Standards 202G, 810F, SAE J1455
ESD	IEC 61000-4-2 (4KV test)
Ingress Protection Rating	IP67

Physical/Design

Dimensions	9.90 x 2.35 x 2.45" (251 x 60 x 62 mm)
Weight	23.2 oz. (658 g)

Connectors/SIM Access

GPS Antenna	Internal
Cellular Antenna	Internal
SIM Access	Internal (2FF SIM)

Product Options

CalAmp Telematics Cloud API

¹ Subscription service enabled. Contact sales rep for additional details.

CALIFORNIA PROPOSITION 65



WARNING:

This product can expose you to chemicals including Carbon black and Nickel, which are known to the State of California to cause cancer, and including Bisphenol A and 1,3-Butadiene, which are known to the State of California to cause birth defects or other reproductive harm. For more information go to www.P65Warnings.ca.gov